

B \flat major scale - slurred

When you get to the top 3 notes, put a space between 1 and 2. 3 should be close to 2.

Musical notation for the B \flat major scale in the bass clef, slurred. The scale is written across four measures. The notes are: B \flat 2, C3, D3, E3, F3, G3, A3, B \flat 3, A3, G3, F3, E3, D3, C3, B \flat 2. The notation includes slurs over the ascending and descending phrases. Fingering numbers are written below the notes: 2, x1, x1, 2-1, 2, 4-1, x2, 3, x2, 1-4, 2, 1-2, x1, x1, 2.

C harmonic minor scale - separate bows

Musical notation for the C harmonic minor scale in the bass clef, using separate bows. The scale is written across four measures. The notes are: C3, D3, E3, F3, G3, A3, B \flat 3, A3, G3, F3, E3, D3, C3. A second finger (II) is indicated above the B \flat 3 note. Fingering numbers are written below the notes: 2, x1, 3, x1, 2, 4-1, 3, 4, 3, 1-4, 2, x1, 3, x1, 2.

C harmonic minor scale - separate bows

Musical notation for the C harmonic minor scale in the bass clef, using separate bows. This version includes slurs over the ascending and descending phrases. The notes are: C3, D3, E3, F3, G3, A3, B \flat 3, A3, G3, F3, E3, D3, C3. A second finger (II) is indicated above the B \flat 3 note. Fingering numbers are written below the notes: 2, x1, 3, x1, 2, 4-1, 3, 4, 3, 1-4, 2, x1, 3, x1, 2.

D harmonic minor scale - separate bows

Musical notation for the D harmonic minor scale in the bass clef, using separate bows. The scale is written across four measures. The notes are: D3, E3, F3, G3, A3, B3, C \sharp 3, B3, A3, G3, F3, E3, D3. Fingering numbers are written below the notes: 2, x4, x1, 3, 4, 3, x1, x4, 2.

D harmonic minor scale - slurred

Musical notation for the D harmonic minor scale in the bass clef, slurred. The scale is written across four measures. The notes are: D3, E3, F3, G3, A3, B3, C \sharp 3, B3, A3, G3, F3, E3, D3. Fingering numbers are written below the notes: 2, x4, x1, 3, 4, 3, x1, x4, 2.

G harmonic minor scale - separate bows

Musical notation for the G harmonic minor scale in the bass clef, using separate bows. The scale is written across four measures. The notes are: G3, A3, B3, C \sharp 3, D4, E4, F4, G4, F4, E4, D4, C4, B3, A3, G3. Fingering numbers are written below the notes: 2, x1, 3, x1, 2, 4-1, 3, 4, 3, 1-4, 2, x1, 3, x1, 2.

G harmonic minor scale - separate bows

Musical notation for the G harmonic minor scale in the bass clef, using separate bows. This version includes slurs over the ascending and descending phrases. The notes are: G3, A3, B3, C \sharp 3, D4, E4, F4, G4, F4, E4, D4, C4, B3, A3, G3. Fingering numbers are written below the notes: 2, x1, 3, x1, 2, 4-1, 3, 4, 3, 1-4, 2, x1, 3, x1, 2.

E \flat major arpeggio - separate bows

2 x1 - 1 4 2 4 1 - x1 2

E \flat major arpeggio - slurred

2 x1 - 1 4 2 4 1 - x1 2

F major arpeggio - separate bows

2 - 1 4 2 4 1 - 2

F major arpeggio - slurred

2 - 1 4 2 4 1 - 2

A major arpeggio - separate bows

1 - 1 4 2 - 1 3 2 3 1 - 2 4 1 - 1

A major arpeggio - slurred

1 - 1 4 2 - 1 3 2 3 1 - 2 4 1 - 1

B \flat major arpeggio - separate bows

2 - 1 4 2 - 1 3 2 3 1 - 2 4 1 - 2

B \flat major arpeggio - slurred

2 - 1 4 2 - 1 3 2 3 1 - 2 4 1 - 2

C minor arpeggio - separate bows



C minor arpeggio - separate bows



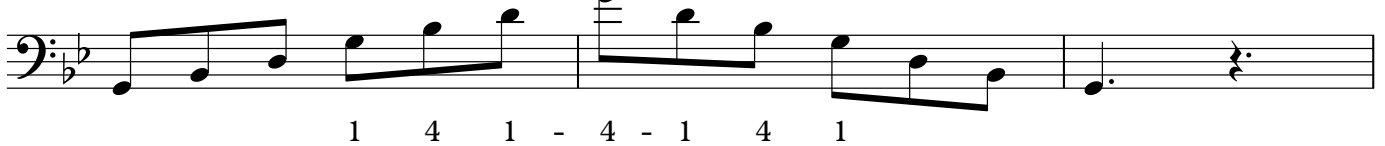
D minor arpeggio - separate bows



D minor arpeggio - slurred



G minor arpeggio - separate bows



G minor arpeggio - slurred



Dominant 7th in the key of G - separate bows

Musical notation for Dominant 7th in the key of G - separate bows. The piece is in 4/4 time and G major. The bass clef staff shows a sequence of eighth notes: G2, A2, B2, C3, D3, E3, F#3, G3. The first and last notes are marked with 'x4' below them. The piece ends with a whole rest.

Dominant 7th in the key of C - separate bows

Musical notation for Dominant 7th in the key of C - separate bows. The piece is in 4/4 time and C major. The bass clef staff shows a sequence of eighth notes: C2, D2, E2, F2, G2, A2, B2, C3. The second and seventh notes are marked with a '2' below them. The piece ends with a whole rest.

D chromatic scale - separate bows

Start in half position (2nd finger on D)

Musical notation for D chromatic scale - separate bows. The piece is in 2/4 time and D major. The bass clef staff shows a chromatic scale: D2, C#2, C2, B1, B#1, A1, A#1, G1, G#1, F1, F#1, E1, E#1, D2. Fingerings are indicated below the notes: 2 3-1 2, 3-0 1 2, 3-1 2 3, 4 3 2 1 - 3 2 1 0 - 3 2 1-3 2.

D chromatic scale - slurred

Start in half position (2nd finger on D)

Musical notation for D chromatic scale - slurred. The piece is in 2/4 time and D major. The bass clef staff shows a chromatic scale: D2, C#2, C2, B1, B#1, A1, A#1, G1, G#1, F1, F#1, E1, E#1, D2. Fingerings are indicated below the notes: 2 3-1 2, 3-0 1 2, 3-1 2 3, 4 3 2 1 - 3 2 1 0 - 3 2 1-3 2. Slurs are placed over groups of notes.

G chromatic scale - separate bows

Musical notation for G chromatic scale - separate bows. The piece is in 2/4 time and G major. The bass clef staff shows a chromatic scale: G2, F#2, F2, E2, E#2, D2, D#2, C2, C#2, B1, B#1, A1, A#1, G2. Fingerings are indicated below the notes: 0 1 2 3 - 1 2 3-0, 1 2 3-1, 2 1-3 2, 1 0-3 2, 1-3 2 1 0.

G chromatic scale - slurred

Musical notation for G chromatic scale - slurred. The piece is in 2/4 time and G major. The bass clef staff shows a chromatic scale: G2, F#2, F2, E2, E#2, D2, D#2, C2, C#2, B1, B#1, A1, A#1, G2. Fingerings are indicated below the notes: 0 1 2 3 - 1 2 3-0, 1 2 3-1, 2 1-3 2, 1 0-3 2, 1-3 2 1 0. Slurs are placed over groups of notes.