

# Double Bass Game of Thrones - Main Theme

Ramin Djawadi arr. S. Sully

♩. = 120



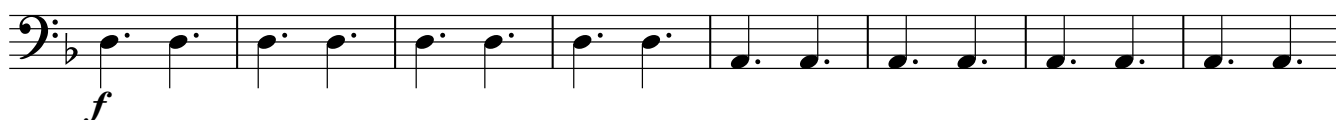
9 **A**



17



25 **B**



33



41 **C**



49



57 **D**



65



73 **E**



Double Bass

82

**F**

**4**

The musical notation consists of a single staff in bass clef with a key signature of one flat. It begins with measure 82, which contains six eighth notes: G2, F2, E2, D2, C2, and B1. A double bar line follows. Measure 83 starts with a dynamic marking of *cresc.* and contains six dotted eighth notes: G2, F2, E2, D2, C2, and B1. Measure 84 continues with six dotted eighth notes: G2, F2, E2, D2, C2, and B1. Measure 85 begins with a dynamic marking of *ff* and contains six dotted eighth notes: G2, F2, E2, D2, C2, and B1. A fermata is placed over the final measure, and the number '4' is written above the staff at the end of the piece.